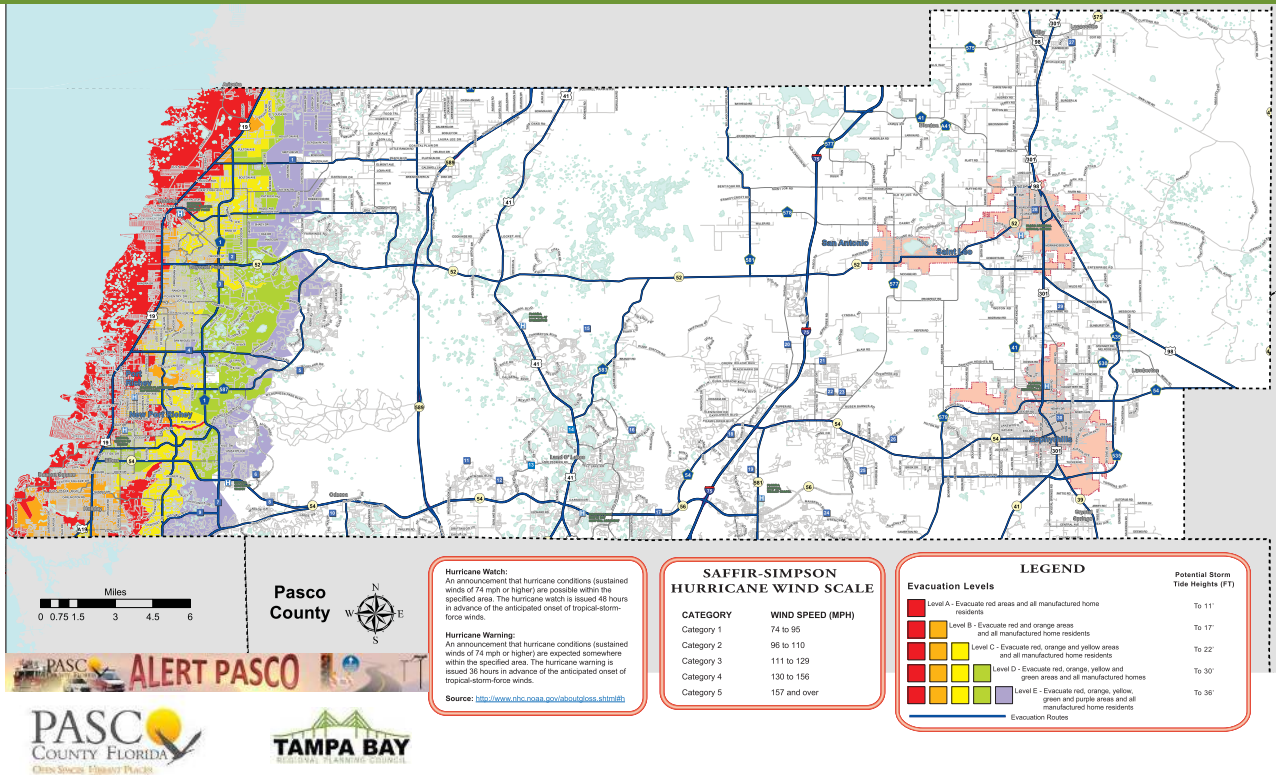


PASCO COUNTY

EVACUATION ZONES & SHELTERS



SHELTER INFORMATION — Refer to Map Above

| NO. | SHELTER NAME | ADDRESS |
|-----|------------------------------------|--|
| 1 | Fasano Regional Hurricane Shelter | 11611 Denton Ave, Hudson |
| 2 | Fivay High School | 12115 Chicago Ave., Hudson |
| 3 | Schrader Elementary School | 11041 Little Rd., New Port Richey |
| 4 | Chasco Elementary School | 7906 Ridge Rd., Port Richey |
| 5 | River Ridge Middle/High School | 11646 Town Center Rd., New Port Richey |
| 6 | Longleaf Elementary School | 3253 Town Ave., New Port Richey |
| 7 | James W. Mitchell High School | 2323 Little Rd., New Port Richey |
| 8 | Trinity Elementary School | 2209 Duck Slough Blvd., New Port Richey |
| 9 | Trinity Oaks Elementary School | 1827 Trinity Oaks Blvd., New Port Richey |
| 10 | Odessa Elementary School | 12810 Interlaken Rd., New Port Richey |
| 11 | Bexley Elementary School | 4380 Ballantree Blvd., Land O' Lakes |
| 12 | Sunlake High School | 3023 Sunlake Blvd., Land O' Lakes |
| 13 | Oakstead Elementary School | 19925 Lake Patience Rd., Land O' Lakes |
| 14 | Sanders Memorial Elementary School | 5126 School Rd., Land O' Lakes |
| 15 | Connerton Elementary School | 9300 Flourish Dr., Land O' Lakes |
| 16 | Pineview Elementary School | 5333 Parkway Blvd., Land O' Lakes |
| 17 | Denham Oaks Elementary School | 1422 Oak Grove Blvd., Lutz |
| 18 | Veterans Elementary School | 26940 Progress Parkway, Wesley Chapel |
| 19 | Seven Oaks Elementary School | 27633 Mystic Oak Blvd., Wesley Chapel |
| 20 | Cypress Creek Middle/High School | 9701 Old Pasco Rd., Wesley Chapel |
| 21 | Watergrass Elementary School | 37250 Overpass Rd., Wesley Chapel |
| 22 | Wesley Chapel High School | 30651 Wells Rd., Wesley Chapel |
| 23 | Thomas E. Weightman Middle School | 30649 Wells Rd., Wesley Chapel |
| 24 | Wiregrass Ranch High School | 2909 Mansfield Blvd., Wesley Chapel |
| 25 | Double Branch Elementary School | 31500 Chancey Rd., Wesley Chapel |
| 26 | New River Elementary School | 4710 River Glen Blvd., Wesley Chapel |
| 27 | Lacoochee Elementary School | 38815 Cummer Rd., Dade City |
| 28 | Pasco Middle School | 13925 14th Street, Dade City |
| 29 | Centennial Middle School | 38505 Centennial Rd., Dade City |
| 30 | Raymond B. Stewart Middle School | 38505 Tenth Ave., Zephyrhills |

Special Needs Shelter
Shelters with this designation are County-staffed Pet Friendly Shelters. Please bring crate, food, water, medications and proof of vaccinations.

Shelters are not listed in the order they are opened and shelter openings vary with each emergency depending on the type and intensity of the disaster. Stay tuned to local media for a listing of shelters which will be opened for an event. Do not go to the shelter until local officials announce through the media that the shelter is open.

Pasco County provides a shelter program for those residents requiring special medically related care. Special needs shelters will be available for persons requiring more skilled medical care than available in a public shelter but not requiring an acute care facility such as a hospital. If this type of extended care is needed, contact the Pasco County Division of Emergency Management at 727-847-8137 to be considered for registration into this program.

USING YOUR COUNTY MAP

1. Locate where you live and work on the map.
2. Determine whether you are in an evacuation area, and if so, what level (color).
3. If you are in an evacuation area, or mobile home/RV, decide where you will go if ordered to evacuate. Your choices include:
 - ✓ Home of a relative or friend outside the evacuation zone
 - ✓ Hotel/motel outside the evacuation zone (make arrangements early)
 - ✓ Go to a public shelter
 - ✓ As a last resort leave the area entirely
4. If you must go to a public shelter, make sure you verify the shelter is open before you go.

HURRICANE THREAT

- ✓ The colored areas on the map are vulnerable to storm surge. Storm surge is produced by water being pushed towards the shore by the force of the winds moving around the storm.
- ✓ Storm surge creates a path of destruction, wiping out structures as it rapidly surges inland and then recedes. This is a life threatening situation for anyone who ignores mandatory evacuation orders and stays in vulnerable areas.
- ✓ Hurricanes are categorized on a scale of 1 to 5, depending on wind strength and destructive power. The evacuation zones are color coded to designate the level of storm surge likely to occur.
- ✓ If you live in an area ordered to evacuate, gather your family/pets and emergency supplies, secure your home and leave immediately. Failure to obey a mandatory evacuation order is a violation of state and local laws.

Note: All persons living in mobile homes/RVs must evacuate for all mandatory evacuation orders, regardless of where you are located in the county.

IMPORTANT CONTACT INFORMATION

| | |
|--|--|
| ANIMAL SERVICES DADE CITY LAND O' LAKES NEW PORT RICHEY | 352-521-5194 813-929-1212 727-834-3216 |
| EMERGENCY MANAGEMENT | 727-847-8137 |
| HIGHWAY PATROL | 352-797-5738 |
| DUKE ENERGY | 800-228-8485 |
| SHERIFF | 727-847-5878 |
| SOLID WASTE | 727-847-8123 |
| SPECIAL NEEDS SHELTER REGISTRATION | 727-847-8137 |
| TECO TO REPORT POWER OUTAGES | 888-223-0800 877-588-1010 |
| WITHLACOOCHIE RIVER ELECTRIC | 352-588-5115 727-868-9465 |
| CATHOLIC CHARITIES | 352-686-9897 |
| AMERICAN RED CROSS | 727-848-8354 |
| SALVATION ARMY | 727-815-8539 |
| UNITED WAY | 727-845-3030 |
| 211 REFERRAL LINE | 2-1-1 |
| NOAA WEATHER RADIO | FIPS code 012101 |
| GET A PLAN | WWW.READY. GOV |
| WWW.PASCOEMERGENCYMANAGEMENT.COM | |

FLOOD THREAT RECOGNITION SYSTEM

Pasco County has a Flood Threat Recognition System that is used by the Division of Emergency Management to monitor and convey threatening conditions to the public. In addition to the information that will be displayed on our website <http://www.pascoemergencymanagement.com>, residents should tune to TV and radio weather broadcasts and be alert to special local advisories. Local radio and TV stations for our area are:

RADIO

| | |
|---------------|--------------|
| WUSF-FM 89.7 | WDAC-AM 620 |
| WFLZ-FM 93.3 | WFLA-AM 970 |
| WSTF-FM 94.1 | WWSB-AM 1040 |
| WSUN-FM 97.1 | WWIB-AM 1450 |
| WXTB-FM 97.9 | WAMA-AM 1550 |
| WQYK-FM 99.5 | WBUL-AM 1620 |
| WMTX-FM 100.7 | |
| WRBQ-FM 100.7 | |
| WJQB-FM 106.3 | |

TELEVISION

(Cable channels are specific to cable provider)

Bay News 9
WFLA-TV News Channel 8
WTSP-TV Channel 10
WTVT-TV Fox 13
WFTS-TV Channel 28

The Pasco County Division of Emergency Management maintains contact with the National Weather Service and National Hurricane Center and relay updates of threatening weather to government, media, hospitals, and nursing homes. The Pasco County Division of Emergency Management can override the cable broadcast system to provide

the public with information on storms, flood watches, and flood warnings. Law enforcement and fire-rescue officials have the ability to deliver flood warning messages if a storm develops overnight with the opportunity to warn the public. Warnings can be delivered to affected residents via telephone through a reverse 911 system. Another source of information is the NOAA Weather Radio. Flood watches and warnings will be broadcast on these radios as soon as they are issued by the National Weather Service.

Evacuation shelters and routes are identified on the website. Assistance in evacuation can be arranged for eligible parties by registering with the Pasco County Division of Emergency Management. Call (727) 847-8137 for information on the Special Needs Program.

LOCAL FLOOD HAZARD

The biggest threat of general flooding is during the hurricane season (June through November). Pasco County is a participating community in the National Flood Insurance Program (NFIP), which means that you can purchase flood insurance to protect your property against the hazard of flooding. Flooding in Pasco County is caused by riverine flooding, closed basin flooding, and coastal flooding. Sometimes these floods occur as flash floods. Riverine and closed basin flooding occur due to rainfall events and are fresh water floods. Coastal flooding is a salt water flood that occurs as a result of storm surge (wind driven water) or heavy rain, which may be exacerbated by an astronomical high tide. Flood damage probability is high in Pasco County because a large number of existing homes were built prior to Pasco County joining the NFIP and receiving Flood Insurance Rate Maps which indicate required structure elevations to avoid or minimize flooding.

ARE YOU FIREWISE??

Wildfires can occur anywhere and can destroy homes, businesses, infrastructure, natural resources, and agriculture. The checklist below provides ways to make your home, property, and other buildings safer from the impacts of wildfires.

- ✓ Thin tree and brush cover and remove dead limbs, brush, and leaves from the property.
- ✓ Mow dry grasses and weeds and maintain an irrigated greenbelt.
- ✓ Move firewood at least 30 feet from the home and other buildings.
- ✓ Prune branches to 10 feet above the ground.
- ✓ Reduce density of surrounding forest.
- ✓ Clean roofs and gutters of dead leaves, debris and pine needles that could catch embers.
- ✓ Replace or repair any loose or missing shingles or roof tiles to prevent ember penetration.
- ✓ Enclose under-eave and soffit vents or screen with metal mesh to prevent ember entry.
- ✓ Cover exterior attic vents with metal wire mesh no larger than 1/8 inch to prevent sparks from entering the home.
- ✓ Repair or replace damaged or loose window screens and any broken windows.
- ✓ Screen or box-in areas below patios and decks with wire mesh to prevent debris and combustible materials from accumulating.
- ✓ Move any flammable material away from wall exteriors — mulch, flammable plants, leaves and needles, firewood piles anything that can burn.
- ✓ Remove anything stored underneath decks or porches.

Source: NFPA Firewise® Communities Program
www.firewise.org